

CONVENTIONAL FIRE ALARM SYSTEMS

HEAT DETECTOR

LF-HD-4112



KM 582697



FEATURES:

- Microprocessor Based Design
- High Accuracy of Fire Detection
- Rate of Rise and Fixed Temperature
- Quick Fire Alarm Transfer Speed
- Polarized Wiring
- Provision for Remote LED Indicator
- Ease of Maintenance
- Multiple Sensitivity Settings
- Up to 30 devices per zone
- 2 LED's for 360deg. Viewing Angle

DESCRIPTION:

The LF-HD-4112 Conventional Type Heat Detector identifies fire with both rapidly rising and gradually increasing temperature. It has three levels of fixed temperature settings to adapt itself to the local temperature of the area being protected.

The detector utilizes a modern, accurate, state of the art Negative Temperature Coefficient (NTC) thermistor that senses thermal changes in the protected area. And combined with the data stored in its non-volatile memory, the detector sends out

alarm information to the Fire Alarm Control Unit during a rapid rise of heat or upon reaching its pre-set temperature rating.

The LF-HD-4112 Conventional Heat Detector also has the provision of connecting a remote LED indicator.

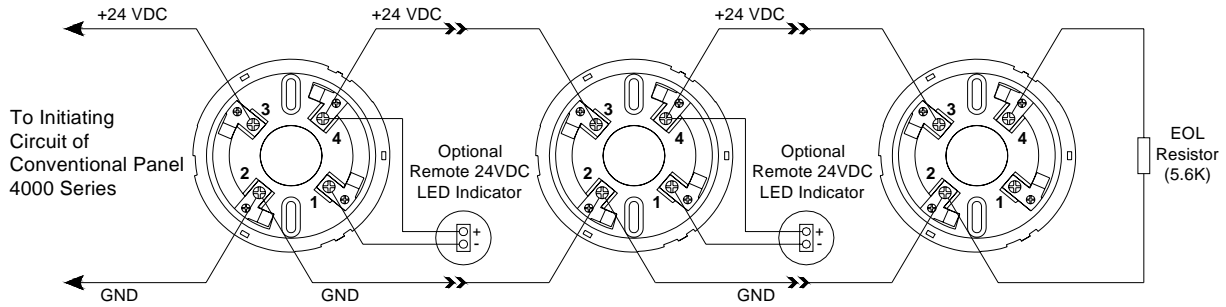
The detector's design widely applies to all kinds of industrial and commercial constructions with its high resistance to humidity, wide operating temperature range, high reliability and ease of installation.

CONVENTIONAL FIRE ALARM SYSTEMS

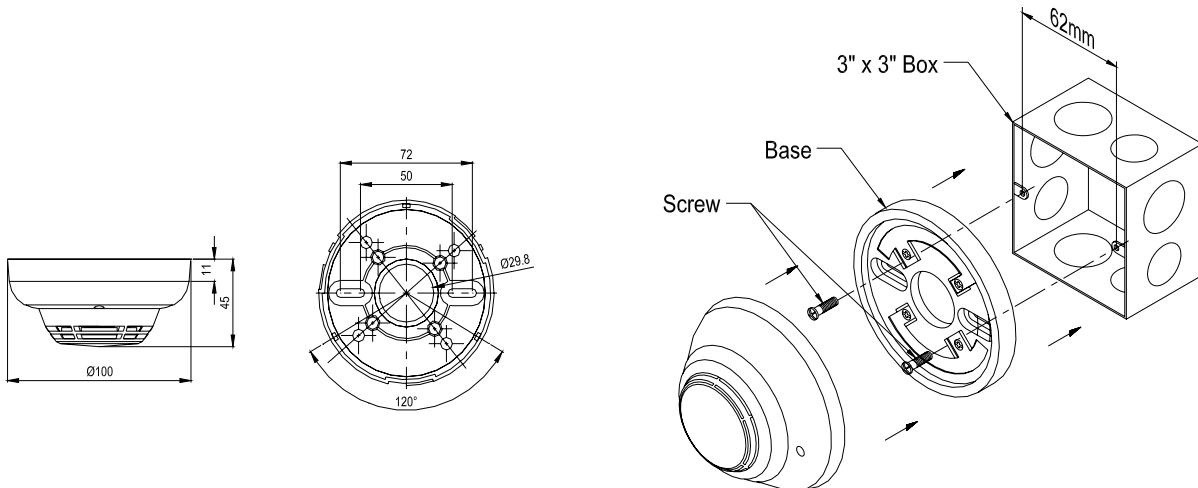
HEAT DETECTOR

LF-HD-4112

WIRING DIAGRAM:

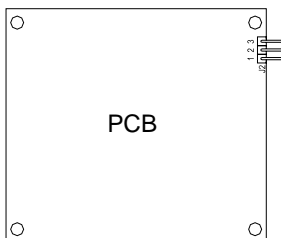


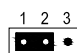
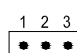
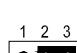
DIMENSIONS AND INSTALLATION DETAILS:

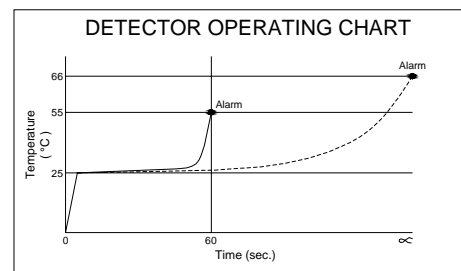


Note: All dimensions are in millimeters

SENSITIVITY ADJUSTMENT:



	High Sensitivity	- 58°C / 136°F
	Normal Sensitivity	- 66°C / 150°F
	Low Sensitivity	- 74°C / 165°F





CONVENTIONAL FIRE ALARM SYSTEMS

HEAT DETECTOR

LF-HD-4112

TECHNICAL SPECIFICATION:

Sensitivity Settings	I (high)	58°
	II (normal)	66°
	III (low)	74°
Maximum Allowable Spacing	1.5m	
Approx Weight	112g (with base)	
Temperature Rating	-10° ~ 55°	
Input Voltage 16 ~ 32 VDC	16 ~ 32 VDC	
Standby Current	30µA	
Alarm Current	40mA	
Peak Current	4mA	
Relative Humidity	0-95% non condensing	
Led Indication (Red)	Pulsing	Standby
	Steady	Alarm
Material	ABS Plastic	
Color	Off-White	