

EAGLE SERIES - FIRE ALARM SYSTEMS

SERIES ADDRESSABLE MANUAL PULL STATIONS

DCP-AMS

DESCRIPTION

The LE-DCP-AMS are the Lifeco series of addressable manual pull stations that provide a fast and practical means of manually initiating a fire alarm signal. Both single action and dual action v stations are available. Resetting of the pull station requires either a Cat 211 key or a 1/8" hex key (depending upon the model used).

An alarm condition is actuated by pulling down on the handle of the LE-DCP-AMS single action models. On the dual action models LE-DCP-AMS-LP the Lift and Pull cover must be lifted before pulling down on the pull station handle. Once the pull station is activated, the handle cannot be put back into a normal standby condition without using the key operated reset feature.

The LE-DCP-AMS series is electronically addressable and includes a bi-colored status LED. The LED blinks green indicating normal communication with the LE-DCP compatible SLC loop. When an alarm condition is actuated by pulling the handle, the LED will latch Red to indicate the alarm condition.



LF-DCP-AMS

FEATURES

- Addressable integrated design
- All metal construction
- Single and dual action models available
- Extremely easy to operate
- Bi-colored status LED indicates Standby and Alarm conditions
- Address is programmable in EEPROM
- Address can be programmed when installed
- Key lock or hex key lock models available
- Terminals accept up to 14AWG wire
- Surface mount back box available

SPECIFICATIONS

Operating Voltage (SLC)	17~41 VDC
Average Current Consumption	600uA (Typical)
Alarm Current	8mA
Ambient Temperature	32°F (0 °C) ~ 120°F (49°C)
Maximum Humidity	90% RH, non-condensing
Dimensions	3.4"W x 4.8"H x 2.0"D
Mounting	Single gang or 4" square electrical box

MODEL DESCRIPTION

LE-DCP-AMS - Single Action Hex Key Lock

LE- DCP-AMS-LP - Dual Action Hex Key Lock



UL S24978

EAGLE SERIES - FIRE ALARM SYSTEMS

SERIES ADDRESSABLE MANUAL PULL STATIONS

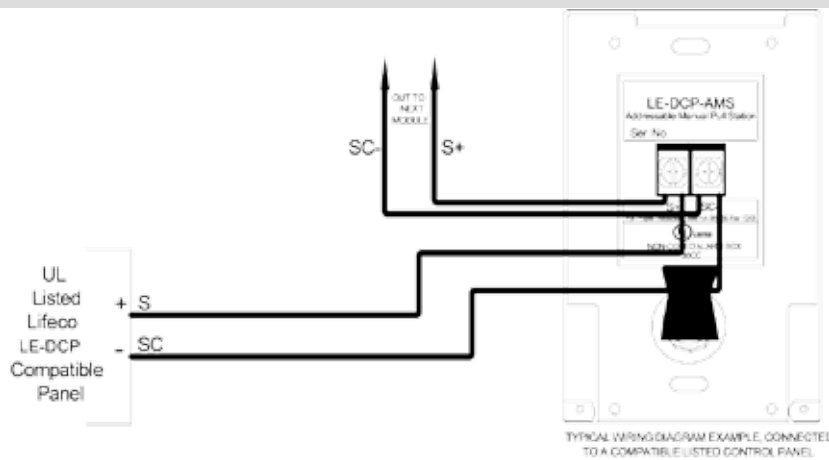
DCP-AMS

ENGINEERING SPECIFICATIONS

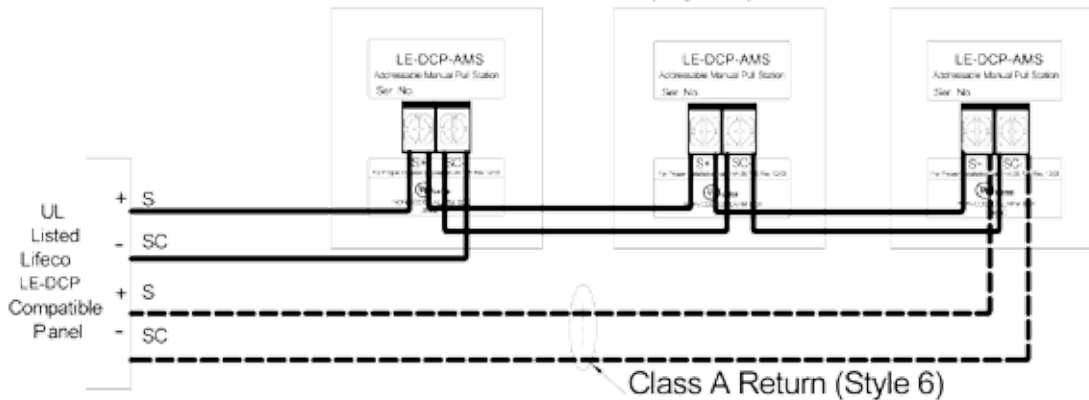
Manual pull stations shall be Lifeco addressable AMS-series single or dual action models, LE-DCP-AMS or LE-DCP-AMS-LP. Models shall be made of 14 AWG CRS and painted with Red enamel. The words Fire Alarm shall be in a contrasting color and be embossed text 1/2" tall. The electronics shall be fully integrated into the

manual pull station requiring only connection to the SLC loop of the control panel. Programming of the manual pull station address must be possible with the manual pull station fully installed. Manual pull stations shall be Underwriters Laboratories Inc. Listed, and be installed within the limits defined in the American Disabilities Act.

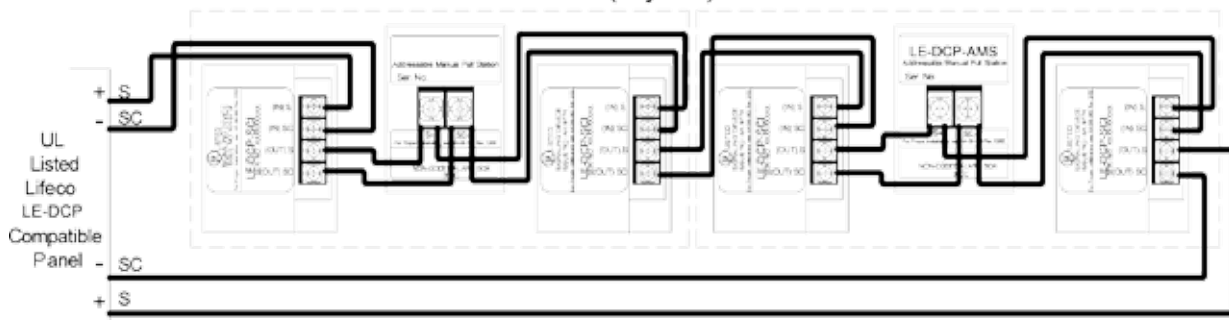
WIRING DIAGRAM



Class B (Style 4)



Class A (Style 7)



EAGLE SERIES - FIRE ALARM SYSTEMS

MANUAL NON-CODED PULL STATION

SERIES LE-HPS-SAVH, LE-HPS-SAK, LE-HPS-DAH, LE-HPS-DAK



LE-HPS-SAH



LE-HPS-DAH

FEATURES

- Metal Construction
- Enclosed switch with glass rod (included)
- 10 Amps @ 120 VAC
- Available in: Single Action and Dual Action
- UL, Listed

DESCRIPTION

Lifeco's Models LE-HPS series pull stations are available in six models:

- LE-HPS-SAH single action
- LE-HPS-DAH dual action

Each model is constructed of a solid die cast housing and comes in glossy red. The back switch plate is plated steel. The electrical switch is rated for 10 Amps @ 120 VDC normally open contact rating. All models are connected via terminal block connections.



UL S24978

SPECIFICATIONS

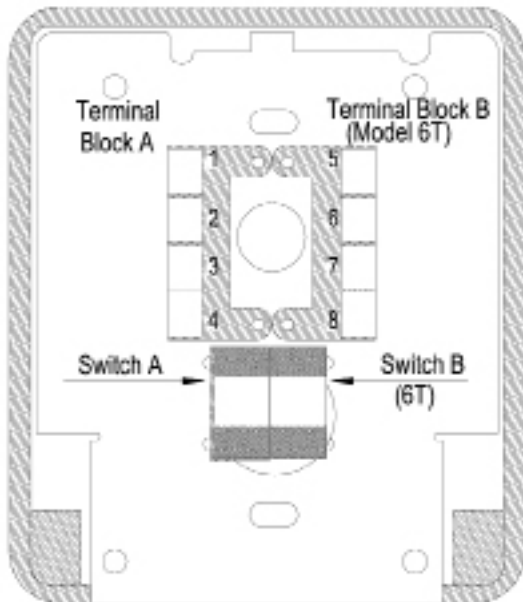
Model	Terminal Block	Terminal Connecting	Switch Function	Terminal Connections			Contact Rating
				LED	Switch	Phone Jack	
LE-SAH, LE-SAK, LE-DAH, LE-DAH/S, LE-DAK, LE-DAK/S	A	2 & 3	SPST	1(+) & 4(-)	1 & 4	1 & 4	10 aMPS @ 125VAC
LE-EXP./WTR. PRF.	A & B	1,2,3,5,6,7	DPDT	4(+) & 8(-)	4 & 8	4 & 8	

EAGLE SERIES - FIRE ALARM SYSTEMS

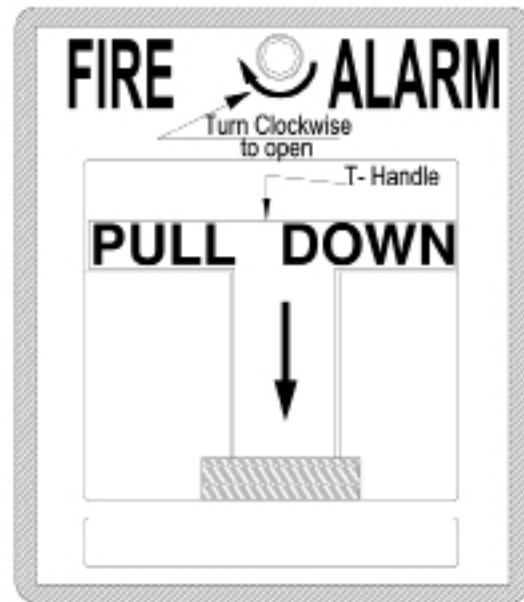
MANUAL NON-CODED PULL STATION

SERIES LE-HPS-SAVH, LE-HPS-SAK, LE-HPS-DAH, LE-HPS-DAK

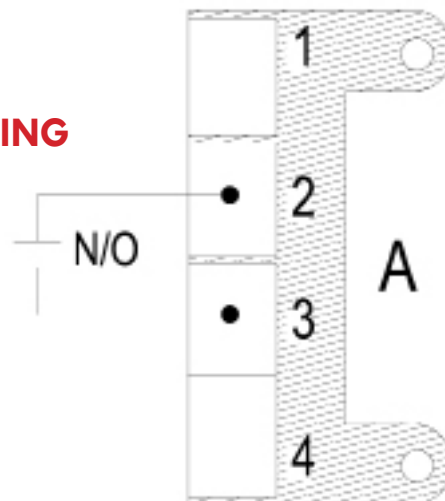
REAR VIEW



FRONT VIEW



ELECTRICAL WIRING



EAGLE SERIES - FIRE ALARM SYSTEMS

EXPLOSION PROOF MANUAL PULL STATION

LE-HPS-SA-EX/WP

DESCRIPTION

The Lifeco LE-HPS-SA-EX/WP Explosion Proof Manual Pull Station is a single action, UL listed fire alarm initiating device. With a UL rating of class I groups B (hydrogen), C and D; class II groups E, F and G; class III and an outdoor rating of type 4X, this station offers unmatched placement flexibility. The 2 sets of Form "C" (NO/C/NC) contacts are rated for 10 Amps at 120/ 240 VAC. The LE-HPS-SA-EX/WP has an easily identifiable pull down lever and contains an integral break glass rod carrier.

The unit is a high quality manual fire alarm box constructed entirely of a high strength metal die-cast alloy with a low profile and rounded edges to fit most design applications. All components are prepainted or have plated surfaces to inhibit corrosion. Non-corroding screw terminals are provided for wire connections to the LE-HPS-SA-EX/WP.

The LE-HPS-SA-EX/WP has a white pull down lever in its center. Pulling down the lever latches it into place. The LE-HPS-SA-EX/WP's normally open contact switch is shorted causing an alarm on the fire initiating loop. The pull down lever can not be reset unless the correct key is inserted into the manual fire alarm box lock and the unit is opened. The latching lever can then be restored to its normal position.

When the LE-HPS-SA-EX/WP is being reset and has a glass break rod installed, all debris must be removed prior to installing another rod to ensure the unit will close and lock securely.



FEATURES

- Compatible with all Hochiki Control Panels
- Rugged die-cast housing
- Rated class I group B (hydrogen) C&D, class II groups E,F,G, class III, 4X outdoor
- Weather Proof
- Corrosion-resistant construction
- Latching alarm levers
- Screw Terminals 12-22 AWG
- Key-locked reset
- Optional glass break rod
- DPDT Contacts

SPECIFICATIONS

Contacts	DPDT Form "C" (NO/C/NC)
Contact Current Rating	10 Amps @ 120/240 VAC
Dimensions	(HxWxD) 4.75 in. x 3.125 in. x 3.375 in. (12.1 cm x 7.9 cm x 8.6 cm)



UL S24978